

Journal Pre-proof

Pre-operative Radiotherapy And Deep Inferior Epigastric artery Perforator (DIEP) flAp study (PRADA): Aesthetic outcome and patient satisfaction at one year.

Amy R Godden , Aikaterini Micha , Rachel L O'Connell , Kabir Mohammed , Anna M Kirby , Paul TR Thiruchelvam , Daniel R Leff , Fiona A MacNeill , Jennifer E Rusby , On behalf of the PRADA Investigators

PII: S1748-6815(22)00672-6
DOI: <https://doi.org/10.1016/j.bjps.2022.11.040>
Reference: PRAS 8078

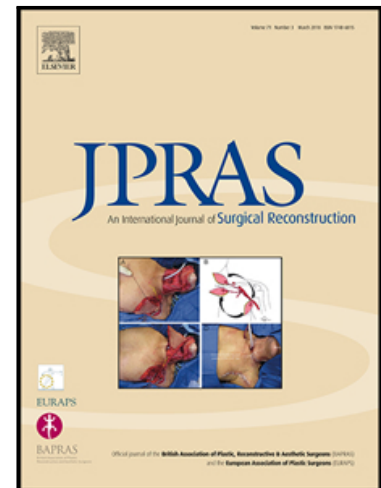
To appear in: *Journal of Plastic, Reconstructive & Aesthetic Surgery*

Received date: 13 June 2022
Accepted date: 17 November 2022

Please cite this article as: Amy R Godden , Aikaterini Micha , Rachel L O'Connell , Kabir Mohammed , Anna M Kirby , Paul TR Thiruchelvam , Daniel R Leff , Fiona A MacNeill , Jennifer E Rusby , On behalf of the PRADA Investigators, Pre-operative Radiotherapy And Deep Inferior Epigastric artery Perforator (DIEP) flAp study (PRADA): Aesthetic outcome and patient satisfaction at one year., *Journal of Plastic, Reconstructive & Aesthetic Surgery* (2023), doi: <https://doi.org/10.1016/j.bjps.2022.11.040>

This is a PDF file of an article that has undergone enhancements after acceptance, such as the addition of a cover page and metadata, and formatting for readability, but it is not yet the definitive version of record. This version will undergo additional copyediting, typesetting and review before it is published in its final form, but we are providing this version to give early visibility of the article. Please note that, during the production process, errors may be discovered which could affect the content, and all legal disclaimers that apply to the journal pertain.

© 2022 Published by Elsevier Ltd on behalf of British Association of Plastic, Reconstructive and Aesthetic Surgeons.



Pre-operative Radiotherapy And Deep Inferior Epigastric artery Perforator (DIEP) flap study (PRADA): Aesthetic outcome and patient satisfaction at one year.

Original article

Amy R Godden,^{1,2}

Aikaterini Micha,¹

Rachel L O'Connell,^{1,2}

Kabir Mohammed,¹

Anna M Kirby,^{1,2}

Paul TR Thiruchelvam,³

Daniel R Leff,³

Fiona A MacNeill,¹

Jennifer E Rusby^{1,2}

On behalf of the PRADA Investigators

¹The Royal Marsden NHS Foundation Trust, United Kingdom. ² Institute of Cancer Research, United Kingdom. ³Imperial College Healthcare NHS Trust, London, United Kingdom.

Funding

Miss Amy R Godden was funded by a grant from the NIHR Royal Marsden / Institute of Cancer Research Biomedical Research Centre and Pink Ribbon. Rachel O'Connell received a 1-year Surgical Research Fellowship from the Royal College of Surgeons of England. This work was supported by the NIHR Imperial Biomedical Research Centre.

Correspondence to:

Miss Jennifer E Rusby

Email: Jennifer.rusby@rmh.nhs.uk,

Telephone work: 02086613118

Mobile: 07957648248

This work was presented at the Association of Breast Surgery Annual Conference 2019

Abstract

Introduction

The optimal combination of radiotherapy and breast reconstruction has not yet been defined. Postmastectomy radiotherapy (PMRT) has deleterious effects on breast reconstruction leading to caution amongst surgeons. Pre-operative radiotherapy (PRT) is a growing area of interest, is demonstrated to be safe and spares autologous flaps from radiotherapy. This study evaluates the aesthetic outcome of PRT and DIEP flap reconstruction within the PRADA cohort.

Methods

PRADA was an observational cohort study designed to evaluate the feasibility and safety of PRT for women undergoing neoadjuvant chemotherapy (NACT) and DIEP reconstruction. Panel evaluation of 3D surface images (3D-SI) and patient-reported outcome measures (BREAST-Q) for a subset of women in the study were compared with those of a DIEP-PMRT cohort who had undergone DIEP reconstruction and PMRT.

Results

17 out of 33 women in the PRADA study participated. 28 women formed the DIEP-PMRT cohort (median follow-up 23 months). Median [IQR] "satisfaction with breasts" score at 12 months for the PRADA cohort was significantly better than the DIEP-PMRT cohort (77 [72-87] versus 64 [54-71] respectively), $p=0.01$). Median [IQR] panel evaluation (5-point scale) was also significantly better for the PRADA cohort than for the DIEP-PMRT cohort (4.3 [3.9-4.6] versus 3.6 [2.8-4] $p=0.003$).

Conclusions

Aesthetic outcome for the PRADA cohort was reported to be "good" or "excellent" in 93% of cases using a bespoke panel assessment with robust methodology. Patient satisfaction at one year is encouraging and superior to DIEP-PMRT at 23 months. Switching surgery-radiotherapy sequencing leads to similar breast aesthetic outcomes, and warrants further large-scale, multi-centre evaluation in a randomised trial.

Key words; DIEP, reconstruction, aesthetics, 3D-SI, neoadjuvant radiotherapy, PROMs

1 Introduction

The optimal integration of radiotherapy and breast reconstruction surgery timing and techniques has not yet been defined. Heterogeneity between studies regarding both surgical and radiotherapy approach, follow-up and primary end points make robust comparison challenging. Postmastectomy radiotherapy (PMRT) is offered to women with higher risk of locoregional recurrence and results in improved local regional control and survival.¹ However PMRT has deleterious effects on the reconstructed breast leading to many women being advised against immediate reconstruction.²

It is now generally accepted that immediate reconstruction is preferable over delayed mainly due to the superior aesthetic outcome achieved by maintenance of the natural skin envelope. While awaiting delayed reconstruction women are affected by low emotional wellbeing, poor body image, and social distress.^{3,4} Autologous breast reconstruction is reported to be, on balance, the technique of choice given its lower rate of complications and reconstruction failure, acceptable flap survival rates,⁵ and cosmesis. The reported deleterious effects of radiotherapy on autologous reconstruction are flap volume reduction (12.3% with radiotherapy versus 2.6% without) and higher rates of fat necrosis,⁶ flap contracture,⁷ and breast symptoms (including neo-breast pain, swelling, sensitivity and skin changes).⁸ Some women experience minimal PMRT reconstruction complications whilst others suffer major complications, some resulting in reconstruction failure, this unpredictability leads to caution among surgeons.

The use of pre-operative or neoadjuvant radiotherapy (PRT) is a growing area of interest in breast cancer treatment.⁹ In the context of reconstruction, the change in sequence of treatment may mitigate some of the effects of PMRT on the reconstructed breast: by irradiating the breast prior to mastectomy and reconstruction, the autologous flap itself is spared radiotherapy, potentially reducing fibrosis and fat necrosis. PRT is consistently reported to be both oncologically and surgically safe.¹⁰⁻¹⁵ Other potential benefits of PRT include reduced time to completion of treatment,¹⁶ improved access to immediate breast reconstruction^{16,17} and the ability to assess tumour response to radiotherapy which may prove to be a surrogate endpoint for local control, potentially improving the efficiency of knowledge-generating research and offering the opportunity for radiobiological studies.¹⁷ Operative concern with PRT were largely related to radiation related-vascular injury leading to poor healing and

necrosis of skin flaps.^{10,18} Outcomes pertaining to wound complications and skin necrosis rates from recent trials involving PRT, mastectomy and breast reconstruction have, however, been reassuring.^{15,19,20} An additional challenge was to define the time line to enable resolution of acute inflammation, facilitate maximise tumour regression yet minimise fibrotic changes within the surgical field.

Aesthetic outcome after PRT and reconstruction is reported to be good to excellent in the majority of studies.^{12,13,15,19} However, heterogeneity between surgical techniques, methods of assessment, scales for scoring cosmesis and follow-up limit comparison between studies or a meta-analysis of results.

The **Pre-operative Radiotherapy And Deep Inferior Epigastric artery Perforator (DIEP) flAp** study (PRADA study) [NCT02771938] was a prospective cohort study to assess the surgical safety and feasibility of PRT in women with locally advanced breast cancer undergoing neoadjuvant chemotherapy, mastectomy and deep inferior epigastric artery perforator (DIEP) flap reconstruction who would be recommended PMRT. The primary end-point was presence of an open breast wound at 4 weeks post-surgery.²¹ Secondary endpoints included aesthetic evaluation and patient satisfaction, and these are reported here.

2 Methods

The PRADA study recruited at two major London centres performing a high volume of autologous breast reconstructions. All patients that were due to undergo NACT, mastectomy with DIEP flap reconstruction (either following unsuccessful breast conservation surgery or upfront selection), and PMRT were offered the alternative sequence of radiotherapy before skin-sparing mastectomy and DIEP reconstruction. In these patients, radiotherapy was delivered to the breast (+/- regional nodes) 2-6 weeks after completing neoadjuvant chemotherapy and 4-6 weeks before surgery. The radiotherapy dosing schedule was either 40Gy in 15 fractions over 3 weeks or 42.72Gy in 16 fractions over 3.2 weeks. 33 patients were recruited to the PRADA study between 2016-18 and the primary outcome measure was presence an open wound at 4-weeks. All participants were invited to participate in 3D-SI at baseline, 3 and 12 months post-operatively to enable aesthetic evaluation of the outcome. Only one of the three sites had 3-Dimensional Surface Imaging (3D-SI) capability so, while all participants were invited to join the aesthetic outcome sub-study, only those who were able to travel to that site were included. At the same time points, participants also completed a BREAST-Q breast reconstruction questionnaire - a validated patient reported outcome measure (PROM) used to measure health related quality of life and patient satisfaction.²²

Table 1. Inclusion and exclusion criteria for the PRADA and DIEP-PMRT cohorts.

	Inclusion Criteria	Exclusion Criteria
PRADA Cohort ²¹ (PRT – DIEP)	>18 years Histopathological confirmation of breast cancer Require mastectomy for any reason Require adjuvant radiotherapy Suitable for DIEP flap reconstruction at the time of mastectomy	Inability to give informed consent MDM unable to recommend radiotherapy based on pre-operative histopathological and imaging findings Severe chemotherapy toxicity affecting treatment plan schedule
DIEP – PMRT cohort ²³	>18 years Histopathological confirmation of breast cancer Mastectomy and immediate DIEP reconstruction PMRT Operated between 2009-2014 at the Royal Marsden Hospital Able to attend for 3D-SI and complete BREAST-Q	Subsequent diagnosis of local recurrence, contralateral breast cancer, or metastatic disease Less than 1 year after the end of oncologic treatment Inability to answer the questionnaire or living outside the United Kingdom DIEP flap for chest wall resurfacing rather than breast

		reconstruction DIEP flap for non-breast cancer abnormality (e.g., sarcoma) DIEP flap for cosmetic failure of other reconstruction/breast conservation “Salvage” DIEP flap reconstruction i.e. failure of implant reconstruction to a flat chest wall and subsequent DIEP reconstruction.
--	--	---

Results from a previous study of aesthetic outcome after DIEP flap reconstruction and PMRT at the Royal Marsden were used for comparison and will henceforth be referred to as the DIEP-PMRT cohort.²³ The 28 participants in the DIEP-PMRT cohort underwent mastectomy and DIEP reconstruction followed by PMRT between 2009 and 2014. A single 3D-SI and BREAST-Q were completed at a median follow up of 23 (IQR 17-38) months after treatment. Some women in the DIEP-PMRT cohort received a higher dose of radiotherapy than those in the PRADA group (Table 2). Propensity-matching was not undertaken as the follow-up period did not overlap.

Table 2. Demographics for the PRADA aesthetic cohort and the DIEP-PMRT cohort

	PRADA cohort n=17	DIEP-PMRT cohort n=28	Significance
Age mean (range)	49 (36-60)	57 (42-74)	P<0.001
BMI mean (range)	27 (21-36)	27 (21-34)	P=0.57
Follow up in months median (IQR)	12 (12-12)	23 (17-38)	P=0.01

Axillary treatment (%)			
Surgery			P=0.29
SLNB	9 (47)	9 (32)	
ALND	8 (53)	19 (68)	
Radiotherapy			-
Axilla	2		
SCF	11		
IMC	1		
Symmetrising surgery (%)	4(24)	6(21)	P=0.869
Radiotherapy regime (%)			
50Gy 25#	0	7 (25)	P=0.09
40Gy 15#	13 (76)	13 (46)	
42.67Gy 16#	4 (24)	2 (7)	
Performed at a different centre	0	6 (21)	

3D-SIs were acquired using VECTRA XT® capture system (Canfield Scientific, New Jersey, USA). Women were positioned with their hands on their hips and their elbows behind the mid-axillary line to optimise visualisation of the lateral aspect of the breast. The images were taken at the end-inspiratory pause during quiet breathing.

3D-SIs from both cohorts were subject to panel evaluation using a scale developed through a Delphi consensus process specifically for breast reconstruction.²⁴ It consists of 5 sub-scales (symmetry, volume, shape, position of breast mound, and nipple-areola complex) in addition to a global scale. A 5-point Likert scale was used for each scale ranging from 'very poor' (1) to 'excellent' (5) (Table 3). Nine clinicians with at least 5 years' experience at consultant level comprised the panel: three oncoplastic surgeons, three plastic surgeons, and three radiation oncologists. To reduce bias, panellists were blinded to surgeon, radiation oncologist, and patient identity, as well as to the treatment received. A standardised sequence of 7 views of each 3D-SI was shown to the panel (right and left lateral and oblique, anteroposterior, cranial, and caudal). Images were viewed in one sitting and panellists could

ask for a patient sequence to be repeated if they required more time to give a score. Pre-treatment images were not scored. Discussion about scores was not permitted. The panel was not shown benchmark images.

Table 3. Likert scale used in the panel evaluation

		Excellent 5	Good 4	Moderate 3	Poor 2	Very Poor 1
Shape	The global shape of the reconstructed breast/s	Shape symmetry out of bra achieved	Shape of operated breast is pleasing but not symmetrical	Moderate difference in shape but does not detract from overall aesthetic result	Moderate focal deficits detracting from overall aesthetic result	Large focal deficits distorting contour significantly detracts from overall aesthetic result
Volume	Overall volume symmetry between breasts	Equal volume between breasts	Minor difference in Volume	Moderate difference in volume but does not detract from overall aesthetic result	Volume difference impacts overall aesthetic result	Major volumes mismatch significantly detracts from overall aesthetic result
Nipple Position	Nipple position in relation to the ipsilateral breast	Excellent symmetry between sides and nipple in an ideal position on reconstructed breast mound	Minor adjustments required to achieve excellence in nipple position	Noticeably suboptimal but does not influence overall aesthetic results	Nipple position slightly impacts overall aesthetic result	Nipple position significantly detracts from overall aesthetic result
Position of Breast Mound	In relation to chest wall and other breast	Equal to the other side and in an optimal position on chest wall	Minor asymmetry of position or symmetrical but suboptimal position	Asymmetry of position or symmetrical but suboptimal position not detracting from overall aesthetic result	Slightly impacts overall aesthetic result	Significantly detracts from overall aesthetic result
Symmetry	Comparison between breasts	Out of bra symmetry achieved	Mild asymmetry	Moderate asymmetry but does not detract from overall aesthetic result	Moderate asymmetry detracting from overall aesthetic result	Significant asymmetry detracting from overall aesthetic result
Global	Taking into consideration subscale evaluation what is your overall	Excellent	Good	Moderate	Poor	Very Poor

	impression of the quality of the reconstruction					
--	---	--	--	--	--	--

The BREAST-Q reconstruction module questionnaires were analysed using the Q-Score software. The resulting Q-score is from 0-100, with 100 being the best score. The results were compared with those from the DIEP-PMRT cohort. The minimal difference in the reconstruction BREAST-Q score which translates into clinical utility has been calculated at 4 points.²⁵

Statistical Analysis

IBM SPSS Statistics 24 was used to analyse the data. The mean global panel score from the 9 panellists was used for analysis. Simple descriptive statistics were used, either mean and standard deviation or median and inter-quartile range according to the distribution of the data. The Mann-Whitney U test was used to describe the significance of between-group differences for panel and Q-scores.

3 Results

Seventeen out of 33 women from the PRADA study participated in the aesthetic evaluation. 3D-SI was completed by 15 women at baseline, 15 at three months' and 13 at 12-months' follow-up. BREAST-Q was completed by 14 women at baseline, (pre-operative), 13 at 3 months and 12 at 12 months. Completed BREAST-Q questionnaires were available for 27 of the 28 participants in the DIEP-PMRT cohort and 3D-SI was available for all.

Demographics and clinical data are reported in Table 1. Operation dates for the DIEP-PMRT cohort ranged from October 2009 to September 2014 and for the PRADA cohort from April 2016 to March 2018. Median follow-up was significantly shorter in the PRADA group compared to the DIEP-PMRT cohort at 12 (IQR 12-12) and 23 (IQR 17-38) and months respectively ($p < 0.01$). Mean (range) age was significantly lower in the PRADA cohort compared to the DIEP-PMRT cohort 49 (range 36-60) and 57 (range 42-72) ($p < 0.01$). BMI was similar between cohorts. Median time from radiotherapy to surgery for the whole PRADA cohort was 20 days in the PRADA cohort.

Patient satisfaction

The median (IQR) 'satisfaction with breasts' Q-score for the PRADA cohort was 48 (48-53), 73 (67-81) and 77 (72-87) at baseline, 3 and 12 months respectively, and 64 (54-71) in the DIEP-PMRT cohort at a median follow-up of 23 (IQR 17-38) months (

Figure 1). The Q-score for the PRADA cohort at 12 months was significantly higher than for the DIEP-PMRT cohort ($p = 0.01$). The Q-scores for the other BREAST-Q domains are illustrated in Table 4.

Figure 1. Box and whisker plot comparing the median Q-Score for the BREAST-Q reconstruction module for the PRADA cohort at baseline, 3 and 12 months and the DIEP-PMRT cohort (median follow up 23 months). Q-score of 100 is the maximum achievable.

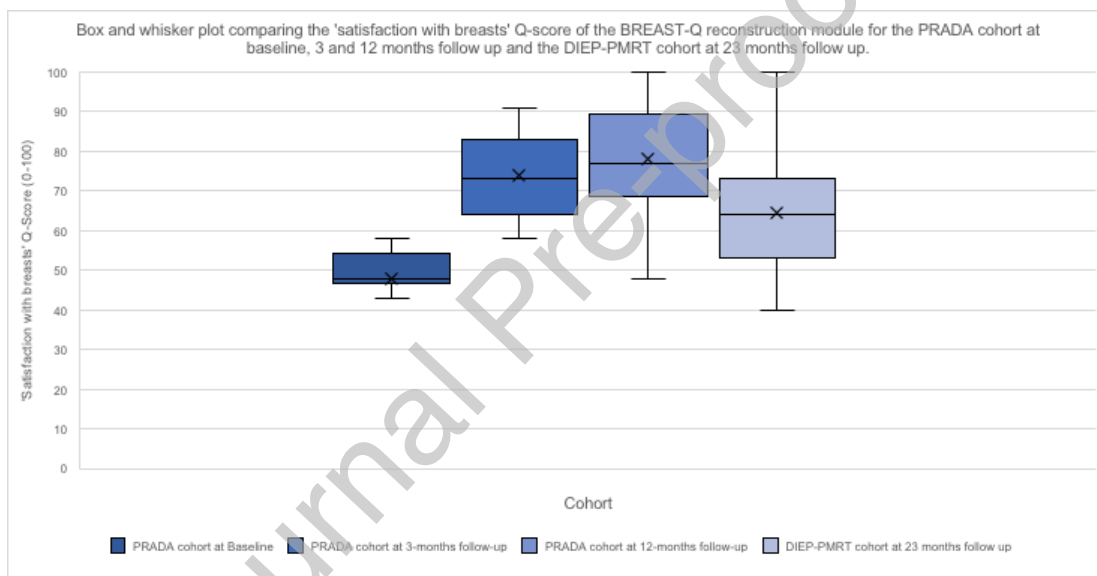


Table 4. Summary of Q-score for the BREAST-Q Reconstruction module for the PRADA cohort at baseline, 3 and 12 months post-surgery and the DIEP-PMRT cohort (median follow up 23 months). Q-score of 100 is the maximum achievable.

Measurement time-point	Satisfaction with breasts	Satisfaction with outcome	Psychosocial wellbeing	Physical wellbeing (chest)	Physical wellbeing (abdomen)	Sexual wellbeing
	Median (IQR)	Median (IQR)	Median (IQR)	Median (IQR)	Median (IQR)	Median (IQR)
PRADA cohort baseline	48 (48-53)	-	60 (53-79)	77 (70-91)	92 (83-100)	48 (40-60)

n=14/17						
PRADA cohort at 3 months n=13/17	73 (67-81)	100 (75-100)	79 (67-82)	63 (58-78)	70 (67-84)	54 (49-67)
PRADA cohort at 12 months n=12/17	77 (72-87)	100 (83-100)	76 (62-92)	83 (80-93)	79 (70-100)	57 (42-93)
Historic control n=27/28	64 (54-71)	75 (67-100)	70 (62-86)	74 (66-85)	89 (75-89)	49 (44-66)

Panel assessment of aesthetic outcome

The median (IQR) global panel score for the PRADA cohort at 3 months was 3.9 out of 5 (3.8-4.4) and 4.3 out of 5 (3.9-4.6) at 12 months, the for the DIEP-PMRT cohort was 3.6 out of 5 (2.8-4) at 23 months as illustrated in

Figure 2. The panel score for the PRADA cohort at 12 months was significantly higher than for the DIEP-PMRT cohort at 23 months follow-up ($p = 0.003$). Figure 3 shows example 3D-SIs of participants from the PRADA and DIEP-PMRT cohorts with close to median panel scores.

Figure 2. Box and whisker plot comparing median panel scores for the PRADA group at 3 and 12 months post-operatively and the DIEP-PMRT cohort (median post-radiotherapy follow up 23 months). DIEP; deep inferior epigastric artery perforator flap, PRADA; pre-operative radiotherapy and DIEP flap reconstruction study, PMRT; post mastectomy radiotherapy.

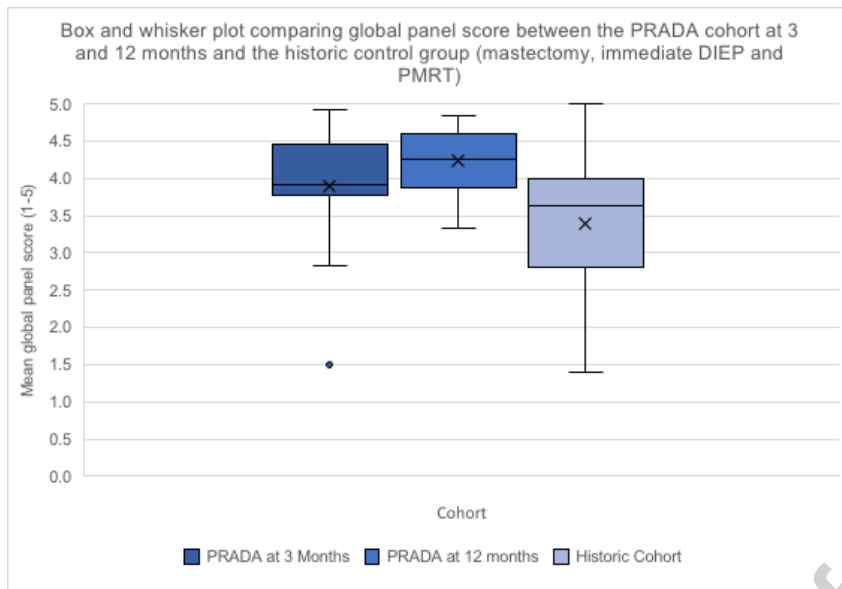
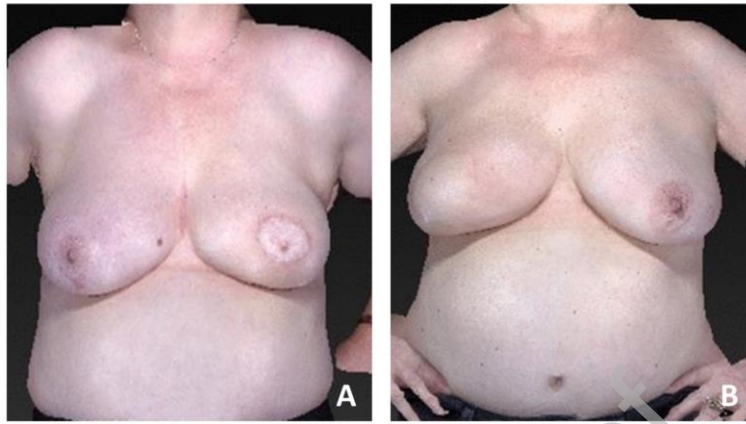


Figure 3 3D-SIs to represent median panel score from both cohorts. A) 3D-SI from the PRADA cohort with a panel score of 4.3 and 'satisfaction with breasts' score of 85 (PRADA cohort median panel and BREAST-Q scores 4.3 and 77). B) 3D-SI from the DIEP-PMRT cohort with a panel score of 3.6 and 'satisfaction with breasts' score of 69 (DIEP-PMRT cohort median panel and BREAST-Q scores 3.6 and 64). Both participants had unilateral surgery with no symmetrisation.



4 Discussion

This is the first prospective study to report on aesthetic outcome using a validated scale after PRT and DIEP flap reconstruction. Good expert panel aesthetic scores were awarded to the PRADA cohort, with a median panel score of 4.3 out of a maximum of 5 points at 12 months' follow-up. This was significantly better than the scores awarded to DIEP-PMRT cohort. However, as PRADA was a surgery feasibility study, it was not powered for this specific endpoint. The wider IQR observed in the DIEP-PMRT cohort may reflect the variability of results with PMRT, and potentially indicate more predictable results with PRT.

There are caveats to the comparison, in that the follow-up period for the DIEP-PMRT cohort is almost double that of the PRADA cohort, therefore the effect of radiotherapy over time may not be fully appreciated. It is reported that two thirds of complications of PMRT occur within the first year and 80% within two years,^{26,27} so although major differences are unlikely to have been missed, longer-term follow up is required to examine degradation of aesthetic

results over time in both cohorts to truly appreciate the potential differences between PRT and PMRT on DIEP flap reconstruction aesthetic outcomes. There were also differences in radiotherapy dose between groups with a proportion (although not statistically significant) in the DIEP-PMRT cohort receiving higher dose which may confound aesthetic outcomes.

Patient satisfaction with breasts

A 13-point difference in 'satisfaction with breasts' score was observed between the PRADA aesthetic cohort at 12 months and the DIEP-PMRT cohort at 23 months, and while this suggests better aesthetic outcome after PRT, we may not observe such a difference in a randomised study where the groups are more closely matched. Scores improved between 3 and 12 months, and one hypothesis is that post-operative discomfort or physical limitation, oedema and scarring improve over this time frame. An alternative hypothesis is that the women who did not provide a response to the questionnaire at 12 months were less satisfied. Two of the five women who did not respond at 12 months, did respond at 3 months. Their scores were below the group's median for both 'satisfaction with breasts' and 'psychosocial wellbeing'. This reinforces the need for a larger, ideally randomised, trial.

Panel assessment of aesthetics

Ninety two percent of patients in the PRADA cohort received a good/excellent panel score (score of 4 or 5). Comparison with other PRT/reconstruction studies is challenging not only because of methodological differences between panel evaluations, but also numerous other differences between studies.

In 2010, Giacalone et al reported aesthetic outcomes for 18 patients who received neoadjuvant chemoradiotherapy, skin-sparing mastectomy and immediate latissimus dorsi reconstruction and 54 patients who received mastectomy, adjuvant radiotherapy and delayed reconstruction at mean follow up of 4.7 years (without explicit reporting of the difference in follow-up between the two groups). 78% of the neoadjuvant chemoradiotherapy and immediate reconstruction group were awarded a good or excellent score by physicians versus 87% for the delayed reconstruction group.¹⁹ The investigators employed the Gerber scale which includes 6 domains each with a maximum of 2-points (volume, shape, symmetry, ipsilateral and contralateral scars, and infra-mammary fold),²⁸ and two physicians rated the outcome either in person at a follow-up visit or using photographs. Although certain domains are similar to those used in the PRADA study, the methodology is different on a number of

levels (blinding, number of raters, views, 2D versus 3D photography). In addition, the comparison is drawn between a group with PMRT and delayed reconstruction limiting the relevance of the comparison.

A German group, also using the Gerber scale, reported good or excellent aesthetic outcome in 6 of 9 patients who underwent PRT, mastectomy and immediate breast reconstruction.¹³ This study had a small sample size and the type of reconstruction included implant-based reconstruction (with ADM, latissimus dorsi, or implant alone), DIEP flap, and transverse rectus abdominis myocutaneous flap (TRAM) which may lead to different results after radiotherapy due to more muscle fibrosis/atrophy. The median follow up was 30 months (again without explicit statement that it was equal for the two groups). The median time from radiotherapy to surgery was 47 days which is longer than for the PRADA cohort (20 days) with a wider range (26 - 162 versus 12 - 39 days). The radiotherapy dose was also higher than for PRADA (50.4Gy versus 40-42.72Gy).

A Canadian group published a retrospective review in 2012 of 30 women who received PRT and autologous reconstruction and reported good or excellent results in two thirds.¹² A 4-point scale described by Kroll was used for shape and symmetry, where 3-points equated to a good score and 4- an excellent score.²⁹ The senior author of the paper evaluated the outcome leaving the results open to bias. The median follow-up was longer than PRADA (3.5 years), the types of reconstruction used were latissimus dorsi, TRAM, or a combined method rather than DIEP reconstruction, the median time from radiotherapy to surgery was longer at 6.9 weeks (range 2.7-12.9), and the dose of radiotherapy was higher for most participants, 50Gy for 60% and hypo-fractionated for 40% (2.5Gy per fraction over 3.5 weeks).

Heterogeneity in study populations may reflect wide variations in clinical practice and changing trends in breast reconstruction. Internationally, over the past two decades, uptake of immediate breast reconstruction has increased (two-fold in the UK between 1996-2012).³⁰ Implant-based breast reconstruction remains the most popular reconstruction method (2015 data), there has been a decline in the popularity of latissimus dorsi based reconstruction and an increase in DIEP flap reconstruction, most notably at specialist and academic centres.³⁰ At one of the institutions involved in the PRADA study, rates of LD-assisted reconstruction fell from 54% to under 1% of total immediate breast reconstruction from 2004-2013. Conversely DIEP flap reconstruction rose from 1% to 38% over the same period.³⁰

Patient-reported outcome measures (PROMs)

The PRADA cohort 'satisfaction with breasts' Q scores at 12 months follow-up was 77 [IQR 72-87], 13 points superior to those of the DIEP-PMRT cohort at 64 [IQR 54-71]. Disparity in follow-up may be a confounder. Participants in the PRADA cohort may also have had a perception of improved reconstructive quality owing to the theoretical benefits of 'sparing' the reconstruction the effects of radiotherapy. Complications associated with radiotherapy and breast reconstruction in the adjuvant or neoadjuvant setting can develop over a number of years, therefore longer term PROMs comparison between PRT and PMRT groups is required.³¹

The literature on aesthetic evaluation of reconstruction followed by PMRT has many limitations, with heterogenous populations and methods. However, it would appear that the 'satisfaction with breasts' Q-score for the PRADA population is also higher than in other studies of PMRT. Q-scores for irradiated implant-based reconstruction range from 40 to 58,³²⁻³⁴ and for irradiated autologous reconstructions from 44 to 66.^{7,34} A study comparing 'satisfaction with breasts' in all types of breast cancer surgery (conservation, mastectomy only, mastectomy and reconstruction (implant and autologous) reported a Q-score of 71 for autologous reconstruction of which only 21% were irradiated.³⁵

A Chinese study compared Q-scores after autologous reconstruction (TRAM or DIEP) with (n=86) and without (n=246) PMRT at >1-year follow-up. At 12 months the 'satisfaction with breasts' and 'psychosocial wellbeing' Q-scores for the unirradiated cohort were 68 and 76 respectively⁷ which are comparable to the PRADA cohort at one year (77 and 76 respectively). Lagendijk et al report Q-scores for psychological, physical, and sexual wellbeing for 83 autologous reconstruction cases (78, 76 and 62 respectively) of which 22% were irradiated,³⁵ which is similar to the PRADA cohort score for the respective domains (76, 83, 57). In contrast, a number of studies have failed to show a difference in patient-reported satisfaction for autologous reconstruction with or without PMRT.^{7,8} While mindful of the aforementioned caveats limiting between-study comparisons, these observations may suggest that patients could be just as satisfied with their aesthetic outcome with PRT as they are in the absence of radiotherapy.

Studies reporting PROMs after PRT are scarce. Giacalone et al used the Gerber scale and reported excellent or good aesthetic outcome in 89% of participants.¹⁹ In a retrospective series of 111 patients who received PRT with latissimus dorsi reconstruction (+/- implant) an average patient satisfaction score of 17 out of 20 (85%) was reported at a median follow-up of 31 months.¹⁵ The questionnaire used was not validated so interpretation of results is challenging, but nonetheless encouraging. Other studies of neoadjuvant radiotherapy and breast reconstruction either do not evaluate aesthetic outcome at all,^{10,11,36} or do not describe their methods.¹⁴ Given that all of the PRADA patients had locally advanced breast cancer and received radiotherapy both of which have a negative impact on patient satisfaction, these early results from the feasibility study are encouraging.^{37,38,39}

Within the limitations of this feasibility study, the PRADA treatment sequencing gives similar breast aesthetic outcomes, and warrants further large-scale, multi-centre evaluation in a randomised trial.

Conclusion

The PRADA cohort represents one of the first prospective cohorts of PRT and DIEP flap reconstruction using validated aesthetic evaluation measures. Aesthetic outcome is reported as good or excellent in 93% of cases using a bespoke panel assessment with robust methodology. Patient satisfaction at one year is encouraging and superior to DIEP and PMRT at 23 months. Heterogeneity in study design and methodology precludes reliable comparisons with published literature.

5 Acknowledgements

This paper represents independent research funded by the National Institute for Health Research (NIHR) Biomedical Research Centre at The Royal Marsden NHS Foundation Trust and the Institute of Cancer Research. The views expressed are those of the authors and not necessarily those of the NHS, the NIHR or the Department of Health and Social Care. This work was supported by the NIHR Imperial Biomedical Research Centre.

We would like to formally acknowledge the contributions of the participants, medical photographer Dennis Underwood, Sue Boyle and the members of the expert panel including Mr S H Wood, Mr S E James, Mr KWD Ramsey, Dr N Somaiah and Dr S Cleator.

6 Compliance with Ethical Standards

There are no conflicts of interest.

All procedures performed in studies involving human participants were in accordance with the ethical standards of the institutional and/or national research committee and with the 1964 Helsinki Declaration and its later amendments or comparable ethical standard. The protocol was reviewed and passed by London-Riverside NRES committee Ref 15/LO/0010. The study is registered on a publicly accessible database, clinicaltrials.gov, NCT02304614

7 References

1. Early and locally advanced breast cancer: diagnosis and management. Evidence reviews for postmastectomy radiotherapy. In. National Institute for Health and Care Excellence: NICE guideline NG101; 2018.
2. Duxbury PJ, Gandhi A, Kirwan CC et al. Current attitudes to breast reconstruction surgery for women at risk of post-mastectomy radiotherapy: A survey of UK breast surgeons. *Breast*. 2015;24(4):502-12.

3. Al-Ghazal SK, Sully L, Fallowfield L et al. The psychological impact of immediate rather than delayed breast reconstruction. *Eur J Surg Oncol.* 2000;26(1):17-19.
4. O'Connell RL, Rusby JE, Sagha A, et al. Exploring the Lived Experience of Undergoing an Immediate Versus Delayed Deep Inferior Epigastric Artery Perforator (DIEP) Flap Reconstruction in Women Who Require Post-Mastectomy Radiotherapy. *Medical Research Archives;* 2021; 9 (8).
5. Halyard MY, Wong WW, Vora SA et al. Acute and chronic results of adjuvant radiotherapy after mastectomy and transverse rectus abdominis myocutaneous (TRAM) flap reconstruction for breast cancer. *Am J Clin Oncol.* 2004;27(4):389-394.
6. Taghizadeh R, Moustaki M, Roblin P et al. Does post-mastectomy radiotherapy affect the outcome and prevalence of complications in immediate DIEP breast reconstruction? A prospective cohort study. *J Plast Reconstr Aesthet Surg.* 2015;68(10):1379-1385.
7. He S, Yin J, Robb GL et al. Considering the Optimal Timing of Breast Reconstruction With Abdominal Flaps With Adjuvant Irradiation in 370 Consecutive Pedicled Transverse Rectus Abdominis Myocutaneous Flap and Free Deep Inferior Epigastric Perforator Flap Performed in a Chinese Oncology Center: Is There a Significant Difference Between Immediate and Delayed? *Ann Plast Surg.* 2017;78(6):633-640.
8. Cooke AL, Lambert P, Diaz-Abele J et al. Radiation Therapy Versus No Radiation Therapy to the Neo-breast Following Skin-Sparing Mastectomy and Immediate Autologous Free Flap Reconstruction for Breast Cancer: Patient-Reported and Surgical Outcomes at 1 Year-A Mastectomy Reconstruction Outcomes Consortium (MROC) Substudy. *Int J Radiat Oncol Biol Phys.* 2017;99(1):165-172.
9. Lightowers SV, Boersma LJ, Fourquet A et al. Preoperative breast radiation therapy: Indications and perspectives. *European Journal of Cancer.* 2017;82:184-192.
10. Monrignal E, Dauplat J, Gimbergues P et al.. Mastectomy with immediate breast reconstruction after neoadjuvant chemotherapy and radiation therapy. A new option for patients with operable invasive breast cancer. Results of a 20 years single institution study. *Eur J Surg Oncol.* 2011;37(10):864-70.
11. Zinzindohoue C, Bertrand P, Michel A et al. A Prospective Study on Skin-Sparing Mastectomy for Immediate Breast Reconstruction with Latissimus Dorsi Flap After Neoadjuvant Chemotherapy and Radiotherapy in Invasive Breast Carcinoma. *Ann Surg Oncol.* 2016;23(7):2350-2356.
12. Ho AL, Tyldesley S, Macadam SA et al. Skin-sparing mastectomy and immediate autologous breast reconstruction in locally advanced breast cancer patients: a UBC perspective. *Ann Surg Oncol.* 2012;19(3):892-900.
13. Pazos M, Corradini S, Schonecker S et al. Neoadjuvant radiotherapy followed by mastectomy and immediate breast reconstruction: An alternative treatment option for locally advanced breast cancer. *Strahlenther Onkol.* 2017;193(4):324-331.
14. Grinsell D, Pitcher M, Nielsen HHM et al. Immediate autologous breast reconstruction after neoadjuvant chemoradiotherapy for breast cancer: initial results of the first 29 patients. *ANZ J Surg.* 2018; 88(3):E137-141
15. Paillocher N, Richard M, Classe JM et al. Evaluation of mastectomy with immediate autologous latissimus dorsi breast reconstruction following neoadjuvant

- chemotherapy and radiation therapy: A single institution study of 111 cases of invasive breast carcinoma. *Eur J Surg Oncol.* 2016;42(7):949-955.
16. O' Halloran N, McVeigh T, Martin J et al. Neoadjuvant chemoradiation and breast reconstruction: the potential for improved outcomes in the treatment of breast cancer. *Ir J Med Sci.* 2019;188(1):75-83.
 17. Boersma LJ, Lightowlers S, Offersen BV et al. Where should we place radiotherapy: Before or after surgery? *Radiotherapy and Oncology.* 2017;s123
 18. Riet FG, Fayard F, Arriagada R, et al. Preoperative radiotherapy in breast cancer patients: 32 years of follow-up. *Eur J Cancer.* 2017;76:45-51.
 19. Giacalone PL, Rathat G, Daures JP et al. New concept for immediate breast reconstruction for invasive cancers: feasibility, oncological safety and esthetic outcome of post-neoadjuvant therapy immediate breast reconstruction versus delayed breast reconstruction: a prospective pilot study. *Breast Cancer Res Treat.* Jul 2010;122(2):439-51.
 20. Baltodano PA, Reinhardt ME, Flores JM, et al. Preoperative Radiotherapy Is Not Associated with Increased Post-mastectomy Short-term Morbidity: Analysis of 77,902 Patients. *Plast Reconstr Surg Glob Open.* 2017;5(3):e1108.
 21. **Thiruchelvam PTR, Leff DR, Godden AR, et al. Primary radiotherapy and deep inferior epigastric perforator flap reconstruction for patients with breast cancer (PRADA): a multicentre, prospective, non-randomised, feasibility study. *Lancet Oncol.* 2022;23(5):682-690.**
 22. Pusic AL, Klassen AF, Scott AM et al. Development of a new patient-reported outcome measure for breast surgery: the BREAST-Q. *Plast Reconstr Surg.* 2009;124(2):345-53.
 23. O'Connell RL, Di Micco R, Khabra K et al. Comparison of Immediate versus Delayed DIEP Flap Reconstruction in Women Who Require Postmastectomy Radiotherapy. *Plast Reconstr Surg.* 2018;142(3):594-605.
 24. Godden AR, Wood SH, James SE et al. A scoring system for 3D surface images of breast reconstruction developed using the Delphi consensus process. *Eur J Surg Oncol.* 2020;46(9):1580-1587.
 25. Voineskos SH, Klassen AF, Cano SJ et al. Giving Meaning to Differences in BREAST-Q Scores: Minimal Important Difference for Breast Reconstruction Patients. *Plast Reconstr Surg.* 2020;145(1):11e-20e
 26. Lee SJ, Kwak YK, Park EY et al. Complication analysis of breast cancer patients treated with mastectomy with IABR and PMRT *Int. J. Radiat. Res.* 2020; 18(3): 389-396.
 27. S Sacotte R, Fine N, Kim JY et al. Assessing long-term complications in patients undergoing immediate postmastectomy breast reconstruction and adjuvant radiation. *Pract Radiat Oncol.* 2017;7(2):e91-e97
 28. Gerber B, Krause A, Dieterich M et al. The oncological safety of skin sparing mastectomy with conservation of the nipple-areola complex and autologous reconstruction: an extended follow-up study. *Ann Surg.* 2009;249(3):461-468.
 29. Kroll SS, Schusterman MA, Reece GP et al. Breast reconstruction with myocutaneous flaps in previously irradiated patients. *Plast Reconstr Surg.* 1994;93(3):460-469; discussion 470-461.
 30. Leff DR, Bottle A, Mayer E et al. Trends in Immediate Postmastectomy Breast Reconstruction in the United Kingdom. *Plast Reconstr Surg Glob Open.* 2015;3(9):e507-e507.

31. Clemens MW, Kronowitz SJ. Current perspectives on radiation therapy in autologous and prosthetic breast reconstruction. *Gland surgery*. 2015;4(3):222-231.
32. Cordeiro PG, Albornoz CR, McCormick B et al. What Is the Optimum Timing of Postmastectomy Radiotherapy in Two-Stage Prosthetic Reconstruction: Radiation to the Tissue Expander or Permanent Implant? *Plast Reconstr Surg*. 2015;135(6):1509-1517.
33. Albornoz CR, Matros E, McCarthy CM et al. Implant breast reconstruction and radiation: a multicenter analysis of long-term health-related quality of life and satisfaction. *Ann Surg Oncol*. 2014;21(7):2159-2164.
34. Alshammari SM, Aldossary MY, Almutairi K et al. Patient-reported outcomes after breast reconstructive surgery: A prospective cross-sectional study. *Ann Med Surg (Lond)*. 2019;39:22-25.
35. Legendijk M, van Egdom LSE, van Veen FEE et al. Patient-Reported Outcome Measures May Add Value in Breast Cancer Surgery. *Ann Surg Oncol*. 2018;25(12):3563-3571.
36. Barrou J, Bannier M, Cohen M et al. Pathological complete response in invasive breast cancer treated by skin sparing mastectomy and immediate reconstruction following neoadjuvant chemotherapy and radiation therapy: Comparison between immunohistochemical subtypes. *Breast*. 2017;32:37-43.
37. Gnanajothy R, Correll JA, Peterson LL. Psychosocial well-being assessment in women with breast cancer. *J Clin Oncol*. 2016;34(3_suppl):207-207.
38. Jensen RE, Potosky AL, Moinpour CM, et al. United States Population-Based Estimates of Patient-Reported Outcomes Measurement Information System Symptom and Functional Status Reference Values for Individuals With Cancer. *J Clin Oncol*. 2017;35(17):1913-1920.
39. Greimel E, Thiel I, Peintinger F et al. Prospective assessment of quality of life of female cancer patients. *Gynecol Oncol*. 2002;85(1):140-147.