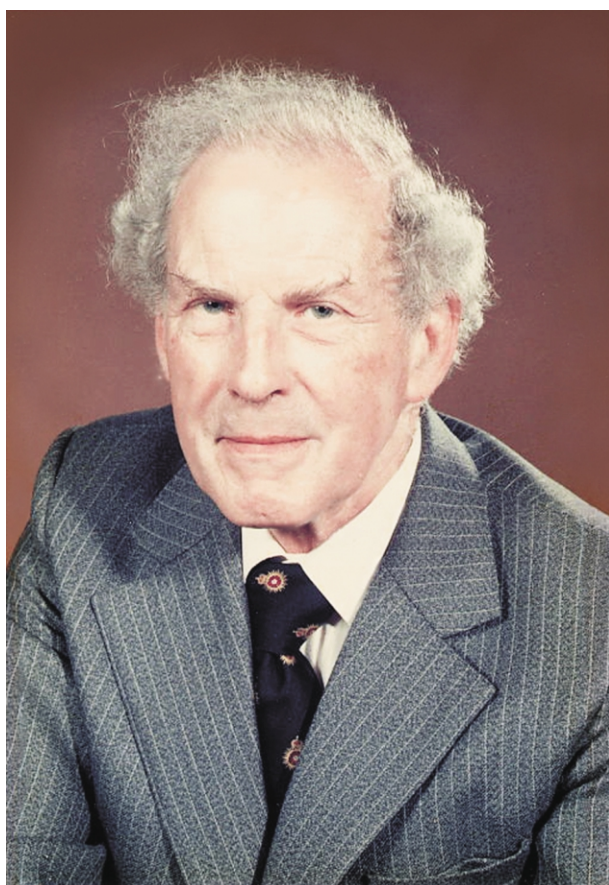




OBITUARY

Joseph Rowland Goodman Edwards

Born 25th July 1915; Died 22nd October 2002



Joseph Edwards was born and raised in Barrow in Furness, Cumbria, the only son of a schoolteacher; he was educated at Ulverston Grammar School, Lancashire.

During his school years he showed evidence of high academic ability and a keen analytical mind and was awarded a scholarship in pure and applied mathematics and physics. On leaving school he was initially undecided as to whether to choose a career in civil engineering or seek a vocation in medicine. Fortunately, he chose the latter. It is evident that his early training laid the foundation for his lifetime academic approach to Plastic Surgery.

His medical training was undertaken at Kings College Hospital Medical School, London, where he won the Raymond Gooch Exhibition in anatomy and physiology, followed by a B.Sc. in physiology in 1938.

On attaining M.B. B.S. in 1941 he undertook various House Surgeon posts prior to becoming R.S.O. at the Plastic Surgery Burns and Jaw Injuries Centre, Gloucester, where he worked for the next three and a half years. It was during this time that he met and married his wife, Betty who was a Theatre Sister in the Royal Devon and Exeter Hospital.

After an 18 months attachment to the RAMC he returned in 1948 to the Gloucester Unit, later transferred to Chepstow, working as Assistant Surgeon to Emlyn Lewis. This was an important stage of his training and the experience was to prove extremely valuable when he came to Newcastle in 1953 where he and Fenton Braithwaite helped to set up the Burns Unit in Newcastle General Hospital. He became a Fellow of the Royal College of Surgeons of England in 1952.

Although his family called him Joe, his professional colleagues always knew him affectionately as 'Teddy'. He first worked in Newcastle as Senior Registrar, then as Consultant from 1957 to 1980. He was a Lecturer in Surgery at the University of Durham, subsequently Newcastle upon Tyne, from 1957 to 1980, with commitments at the Royal Victoria Infirmary, Newcastle General Hospital, The Fleming Memorial Hospital for Sick Children and the Cumberland Infirmary, Carlisle. During this time as a consultant in Newcastle the Plastic Surgery Unit expanded from two to five consultants.

As well as a heavy clinical load, especially in the early years, Teddy undertook much research, and published extensively, particularly on the cleft lip and palate. In 1979 he delivered the Arris and Gale Lecture at the Royal College of Surgeons, London, on 'Laboratory Experiments and Clinical

Observations on the Cleft Palate Malformation'. He was a founder Member and Member of Council of the British Association of Plastic Surgeons. He was also a founder Member of the British Microcirculation Society, Developmental Pathology Society and the British Association of Surgical Oncologists and an invited Member of the New York Academy of Sciences. He also held membership of the Teratology Society and the European Teratology Society. His international reputation was recognised by his appointment as Visiting Professor in Plastic Surgery in Groningen, the Netherlands and Visiting Professor of Plastic Surgery to the Soviet Union where he lectured in post-graduate courses at Kiev, Moscow and Leningrad. He was made an Honorary Research Fellow, University of Newcastle upon Tyne, in 1980 and continued with teratological research for many years after his retirement.

Teddy was greatly devoted to his family, having two sons and a daughter, who were a great support when his wife Betty died in 2002. Having been brought up so close to the Lake District he was always a keen walker and among other less known attributes he was an accomplished chess player and pianist.

He was a generous and kindly man with great consideration for his patients and working colleagues and he was always an interesting companion with entertaining stories and recollections of past incidents and experiences.

He is survived by his sister Gwyneth, his daughter Judith and his sons Robert and Peter.

M.J.M. Black

*Royal Victoria Infirmary,
Newcastle Upon Tyne, UK*